

# Your Semiconductor Manufacturing Plant Construction & Maintenance Advantage

- › Advanced digital planning
- › Local project management
- › Largest labor resources
- › Access & scaffolding
- › Specialty coatings
- › Fireproofing

From digital planning, local management, and the largest labor resources available in the market, to access engineering, scaffolding, and industrial services, BrandSafway has the expertise and solutions you need. Let us partner with you to safely increase productivity on your next manufacturing facility construction, repair or maintenance project.

**BRAND** SAFWAY®

At Work For You®



**AECR+**

Access & scaffold  
Energy efficiency  
Coatings  
Refractory  
+Technology

# The Future of Facility Construction & Maintenance

Digital planning, local project management, largest labor resources and proprietary solutions designed to improve safety and increase productivity.

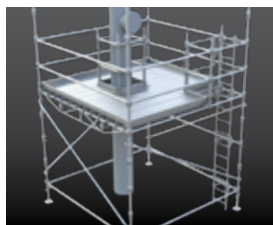
## BrandNet®

- › 3D design and estimating
- › Project management and controls
- › Online scheduling and reporting



## FlexDeck™ System

- › Wood-free, galvanized steel planks
- › Solves all platform penetration challenges
- › Increases safety



## QuikDeck® Suspended Access System

- › Provides factory-floor-like working conditions in the air
- › Allows activity to continue uninterrupted below
- › High load capacities



## Motorized Access

- › Custom high-capacity platform solutions
- › Elevators and hoists
- › Transport platforms



## Specialty Coatings

- › Abrasive blasting
- › Surface preparation
- › NACE-trained and certified inspectors
- › Asset management
- › Corrosion under insulation (CUI) programs



## Fireproofing

- › Full-range of applications and installation methods
- › Corrosion under fireproofing (CUF) management



BrandSafway provides access and industrial service solutions with turnkey installation, engineering support and safety training.

## › Ready to Deliver

**+Safety**

First and Foremost

**+Expertise**

Industry-Leading Depth/Range

**+Solutions**

The Broadest Portfolio

**+Productivity**

Increased at Every Level

**+Local**

Management and Labor

BrandSafway Global Support Center  
600 Galleria Parkway SE, Suite 1100  
Atlanta, GA 30339  
Toll free: 800 558 4772

©2022 All rights reserved. BSL 3318

**BRAND SAFWAY**

For more information, visit [www.brandsafway.com](http://www.brandsafway.com)