

BIC

MAGAZINE

BUSINESS & INDUSTRY CONNECTION

May/June 2022

BICMagazine.com

A BIC ALLIANCE Publication

BRANDSAFWAY: DRIVING THE EVOLUTION OF SPECIALTY SERVICES

BrandSafway delivers the broadest range of turnkey solutions — from access and energy efficiency to coatings, refractory and technology (AECR+) — to maximize operations, mitigate risk and improve productivity for customers.

REPCON: A REPUTATION OF EXCELLENCE

As a leader in construction, turnarounds, maintenance, pipe fabrication and specialty welding services, Repcon has built its reputation of excellence by taking on the toughest jobs and completing them successfully and safely. Repcon is now ushering in an exciting new era for the company, marked by a new corporate headquarters location and an expanded service offering.

FEATURES

Arkema's O'Donovan: Demand for sustainable materials is ever growing

LyondellBasell's Lara: Small Edison site has huge effect

The evolution of industrial specialty craft-labor services

Small changes in U.S. energy production create tectonic shifts

CAPs help communities understand what plants do, how they work

Ensuring quality for biodiesel and renewable diesel

Process safety management demands answers to many questions

Progress on ExxonMobil projects shows resiliency

Industry Makes bridging gaps between industry and public

True leadership recognizes responsibility to community

Louisiana plant managers discuss 'workforce of the future'

Strategies for breaking down communication silos

LAIA's Rock: Industry brings many benefits to Southwest Louisiana

ACCESS

ENERGY

DRIVING THE EVOLUTION OF SPECIALTY SERVICES +

BRANDSAFWAY®

At Work For You®

REFRACTORY

COATINGS

DRIVING THE EVOLUTION OF SPECIALTY SERVICES

BrandSafway is driving change in the specialty services industry by providing the broadest range of turnkey solutions — from access and energy efficiency to coatings, refractory and technology (AECR+) — to maximize operations, mitigate risk, and improve productivity for customers. In addition, with the recent acquisition and integration of Brace Industrial Group in 2021, BrandSafway is now able to deliver even greater value.

“With important complementary strengths in key areas, BrandSafway and Brace are stronger together,” said Gabriel McCabe, president of BrandSafway’s Industrial, Energy and Commercial Division. “As we worked together to fully integrate and combine our strengths, we’ve been able to expand our services and offer our combined customers a larger inventory of equipment and a broader range of solutions.” ➤

Tracking Increased Productivity

Construction is going digital and BrandSafway’s suite of intuitive and powerful smart tools will modernize your jobsite. Improve efficiency through virtual planning and analysis. The right tech can simplify how you track inventory, manage projects, measure data, visualize solutions, communicate and more.

- BrandNet® ➤ Laser scanning – Render digital walk-throughs
- Field work packages ➤ BIM interface ➤ Advanced KPIs
- ProField, SmartPlan, SmartTag, SmartView 3D

smartdigital™
WORKSITE



CASE STUDY – DOWNSTREAM REFINERY TURNAROUND

Used smart tools to manage work packages efficiently and with less labor
Products & services: BrandNet®, workface planning, scaffold

➤ **COST AND TIME SAVINGS 33%**

Industry-Leading Refractory Solutions

Work smarter, safer and more efficiently with BrandSafway’s suite of innovative refractory solutions. Backed by years of safe and successful projects, we consistently deliver superior refractory products and services for reformers, FCCU units, hydrocrackers, crude units, thermal reactors, sulfur recovery units, boilers and more.

- BrandTech® Precision Welding
- BrandTech® Precision Layout
- Quik-X® and Quik-X PRO™
- BrandTech® Power Distribution Unit
- 3D Precast Shapes

BrandTech®
BY BRAND SAFWAY



CASE STUDY – FCCU DISCOVERY WORK

2,500 additional square feet, 20,000 anchors manufactured and delivered in 10 days, saving 7 days versus traditional welding
Products & services: BrandTech Precision anchoring system, welding

➤ **SAVED OVER 7 DAYS**

Comprehensive Motorized Solutions Elevators & Hoists

We’ll get you where you need to go. BrandSafway delivers the broadest range of motorized access solutions in the industry, including personnel and material elevators, hoists, mast climbers, transport platforms and swing stages. When safety and speed matter most, we’ll engineer a solution that meets your unique needs.

- Permanent and temporary elevators
- Explosion-proof elevators
- Mobile material hoists
- Engineering expertise

CASE STUDY – ACCESS CHALLENGE – DISTILLATION TOWER

Transport elevator used to access 245-foot distillation tower, reducing fatigue and saving time
Products & services: Transport platform

➤ **SAVED 25% IN LABOR EFFICIENCY**



With over 100 years of innovation, BrandSafway's local experts, backed by best practices from hundreds of thousands of jobsites worldwide, consistently deliver new, innovative ways to help customers increase productivity, improve safety and create savings in total cost.

BrandSafway is *At Work For You®*, delivering the very best digital tools, refractory services, motorized solutions, heat trace, concrete repair and rope access solutions. Serving the oil and gas, power generation, civil and infrastructure, and commercial construction industries for decades, BrandSafway is the premier all-in-one service provider.

Heat Tracing Prevent Freezing Pipes

- › System design, supply and installation
- › Technical support
- › Innovative control panels

Maintain uniform processing temperatures and protect pipelines and equipment from freezing. With over 20 years of heat tracing expertise, combined with the expertise and innovation acquired from Brace, trust BrandSafway to provide efficient, reliable and effective solutions.

- › Access
- › Inspections and audits
- › Long-term maintenance

- › Fireproofing, coatings and insulation

CASE STUDY – WINTERIZATION TURNAROUND

Facilities in Texas and Florida used heat trace solutions to maintain operations and prevent disruption in freezing temperatures
Products & services: Heat trace audit, installation, control panels

**MAINTAINED
OPERATIONS 100%**



Concrete Repair Turnkey Solutions, Long-Term Results

From airports and bridges to parking garages and generating facilities, we will evaluate, repair and maintain concrete surfaces and structures for long-term performance. Your all-in-one concrete service provider.

- › Concrete integrity
- › Post-tensioning cable durability
- › Heat shield/trace

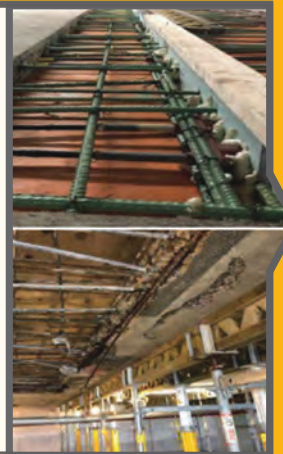
- › Concrete audits
- › Repair and restoration
- › Waterproofing/drainage solutions

- › Shoring/scaffolding
- › Access
- › Panic doors

CASE STUDY – TURNKEY PARKING GARAGE REPAIR SOLUTION

Concrete inspection, shoring and restoration of busy hospital parking garage while remaining in-use
Products & services: Inspection, shoring, repair and restoration, waterproofing, non-skid traffic coatings

**ZERO SAFETY
INCIDENTS
ZERO DOWNTIME**



Safe, Quick & Effective Rope Access

Get craft work done at height using BrandSafway's specialized rope access teams. Used as an independent solution or in combination with other access methods, rope access is quick to set up, has a small footprint, can access difficult to reach areas and lowers equipment costs.

- › Experience – Over 300,000 hours on rope
- › Safety – Zero recordables

- › Training: IRATA Level III certification
- › Ideal for refractory, coatings, insulation and more

CASE STUDY – INDUSTRIAL INSULATION PROJECT

Industrial customer used rope access to inspect, insulate and apply coatings to facilities without disrupting operations
Products & services: Rope access, coatings solutions

**COST 50%
SAVINGS**



HARNESS THE POWER OF OUR REFRACTORY SOLUTIONS

Work smarter, safer and more efficiently with BrandSafway's suite of patented and proprietary refractory solutions. From anchoring to welding to power distribution and more, BrandSafway delivers the broadest range of innovative solutions designed to reduce outage cycle times and increase productivity.

BrandTech® Precision Layout™

Reduce anchor layout time by up to 75%

BrandTech® Precision Welding

Allows 2 people to do work of 16 stick welders

Quik-X™ and Quik-X PRO™

The next evolution in anchoring systems

BrandTech® Power Distribution Unit (PDU)

Save on equipment costs by up to 40%

3D Precast Shapes

Create forms and custom shapes within hours

Complete wraparound services available, including access, insulation, coatings and more.



[BrandSafway.com/Refractory-Services](https://www.brandsafway.com/Refractory-Services)

BRAND SAFWAY

At Work For You®